

COVID-19: A GLOBAL RESPONSE TO A GLOBAL CRISIS

The COVID-19 pandemic has upended societies and economies worldwide and led to the tragic loss of millions of lives. In the face of these challenges, JDC remained a force for stability and continued its work uninterrupted. With the invaluable support of our partners and funders, JDC adjusted and expanded its operations for the new reality and launched new programs to respond to this unprecedented crisis. **Here is a snapshot of our response so far.**

THE CARE CONTINUES — SAFELY

For the **more than 80,000** isolated and at-risk elderly Jews JDC serves in the former Soviet Union (FSU), the pandemic has made a difficult situation worse. To continue providing aid safely, JDC instituted new protocols to protect both clients and homecare workers.

PPE DISTRIBUTED TO HOMECARE WORKERS:



123,000+ CALLS

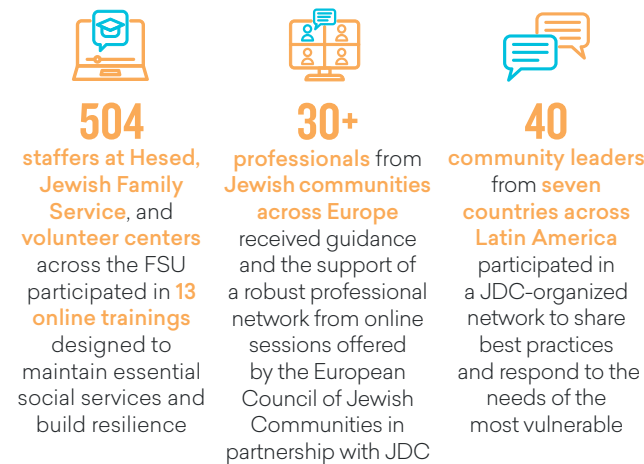
JDC opened **volunteer and professionally staffed hotlines** to ensure quarantined elderly had human contact



Over 200 homecare workers were able to reach clients by **private transportation** when public transportation was not available

SOCIAL WELFARE SUPPORT

When the pandemic struck, we leveraged existing infrastructure to provide support to these front-line responders.



AIDING FAMILIES

The pandemic pushed thousands of Jewish families into economic distress and left those already struggling with even greater challenges.



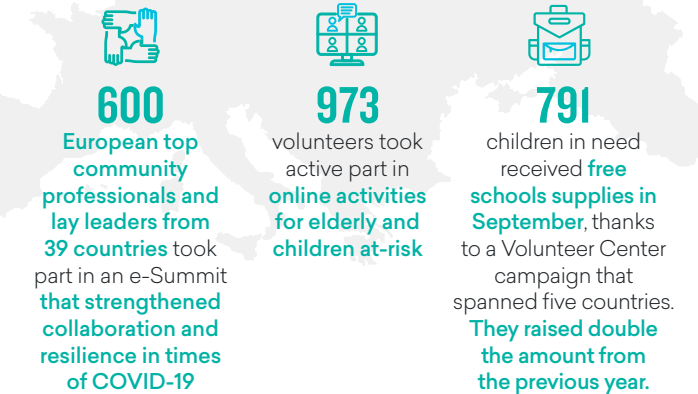
IN ISRAEL, A COMPREHENSIVE RESPONSE

When coronavirus hit Israel in March, it set off two parallel crises: one medical, and one humanitarian. With the Government of Israel and other major partners, JDC worked around the clock to address the needs of thousands of Israelis, ensuring populations on the margins and the organizations that serve them were not left behind



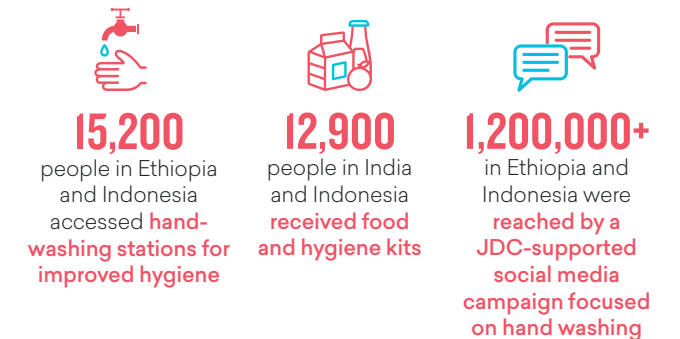
BUILDING COMMUNITY

Strong community has proven vital during the pandemic, both as a safeguard against isolation and a powerful tool for sharing knowledge and building identity and leadership. That's why JDC has continued to leverage its expertise to support Jewish communities worldwide.



TIKKUN OLAM IN THE TIME OF CORONAVIRUS

Guided by our Jewish values, JDC's COVID-19 response also meets emerging humanitarian needs in the developing world.



Data reporting periods may vary by region or program. All figures as of January 2021. For the latest on our COVID-19 response, visit [JDC.org/coronavirusupdates](https://www.jdc.org/coronavirusupdates).